

CORAL CREST SUBDIVISION

PLAT OF

BEING A REPLAT OF PORTIONS OF LOTS 109, 110 AND 111, GOMEZ GRANT AND JUPITER ISLAND, RECORDED IN PLAT BOOK 1 AT PAGE 80, PUBLIC RECORDS OF PALM BEACH (NOW MARTIN) COUNTY, FLORIDA; LYING WEST OF STATE ROAD NO. 707.

CONTAINING 12.6217 ACRES, MORE OR LESS
TOWN OF JUPITER ISLAND
MARTIN COUNTY, FLORIDA
SHEET 2 OF 2

ISLE RIDGE (P.B. 2, PG. 53)

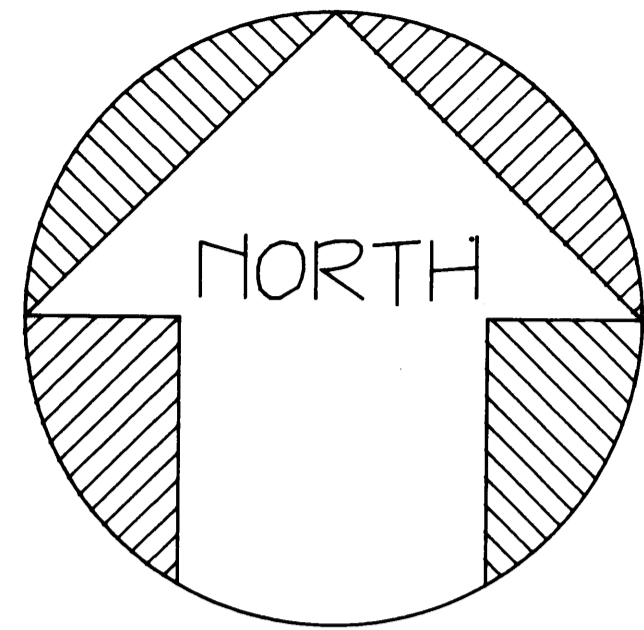
CLERK'S RECORDING CERTIFICATE

I, MARSHA STILLER, CLERK OF THE CIRCUIT COURT OF MARTIN COUNTY, FLORIDA, HEREBY CERTIFY THAT THIS PLAT WAS FILED FOR RECORD IN PLAT BOOK 1, PAGE 80, MARTIN COUNTY PUBLIC RECORDS, THIS DAY OF January, 1999

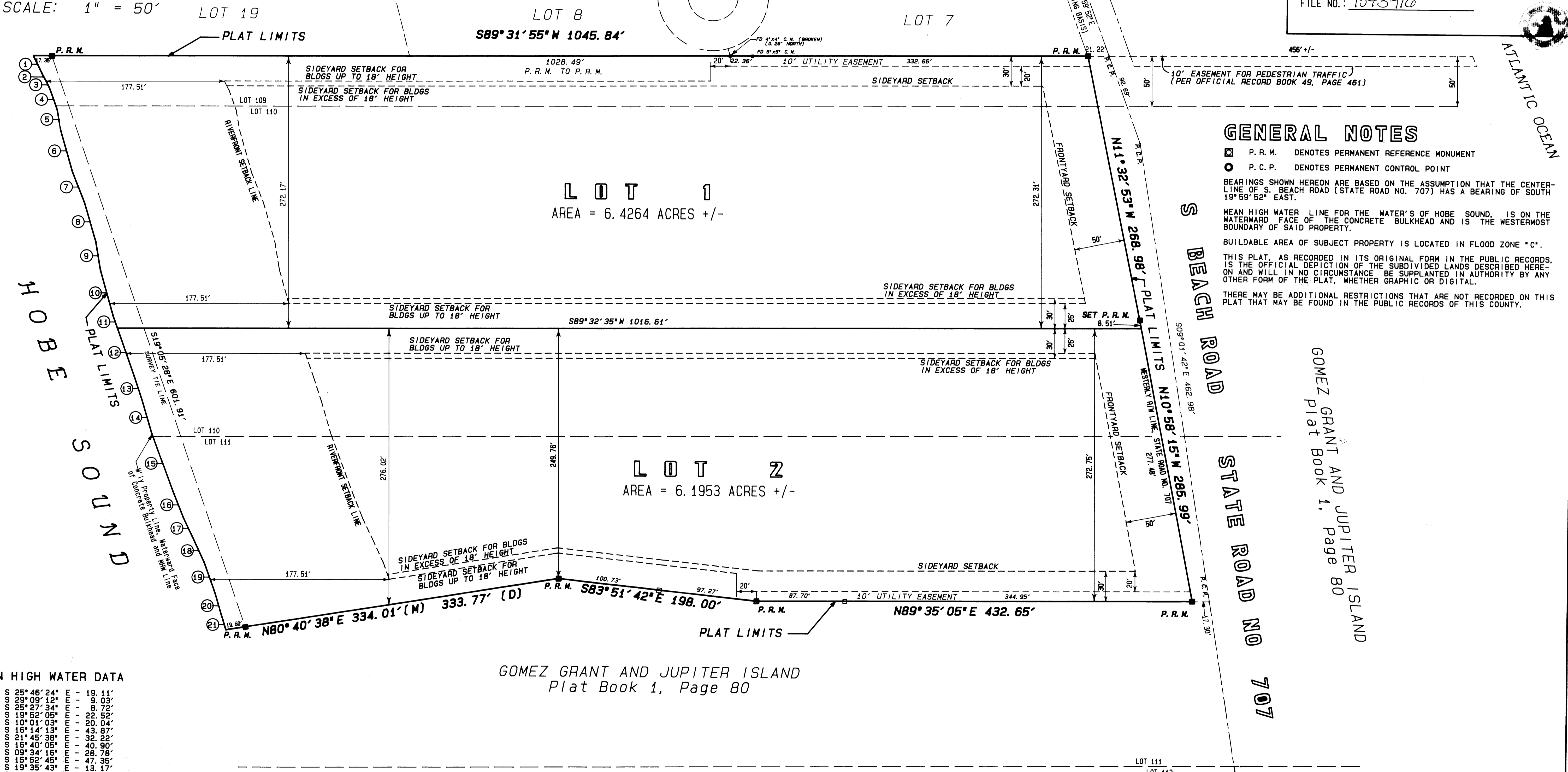
MARSHA STILLER, CLERK OF THE CIRCUIT COURT
MARTIN COUNTY FLORIDA

BY: Andrew D.C.
DEPUTY CLERK

FILE NO.: 1343716



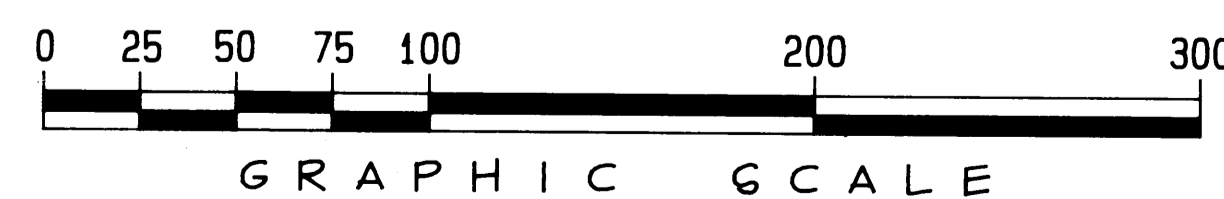
SCALE: 1" = 50'



MEAN HIGH WATER DATA

1	19.11
2	19.09
3	19.07
4	19.05
5	19.03
6	19.01
7	18.99
8	18.97
9	18.95
10	18.93
11	18.91
12	18.89
13	18.87
14	18.85
15	18.83
16	18.81
17	18.79
18	18.77
19	18.75
20	18.73
21	18.71

GOMEZ GRANT AND JUPITER ISLAND
Plat Book 1, Page 80



R. L. VAUGHT & ASSOCIATES, INC.
SURVEYORS, MAPPERS & PLANNERS
9075 S. E. BRIDGE ROAD, HOBE SOUND, FL.
PHONE: (561) 546-8086

ORDER NO.: 803975 FIELD BOOK: SB1, PG 8 SEPT 26, 1994